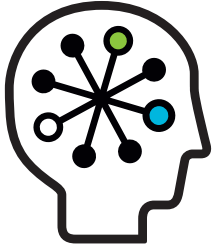


# HP and Troux

The IT operations to business connection



HP and Troux provide greater visibility into how business changes and IT operations impact one another, helping you improve your IT change management processes and immediately identify where aging technologies are putting the business at risk.

## Key questions answered

- What parts of my infrastructure are approaching end of life?
- Where does this present the greatest risk to the business?
- What is impacted if this infrastructure is changed?
- Who owns the applications that this technology supports?
- What business capability does this technology support?
- How critical is this technology to the business?
- How do I rapidly estimate the impact of a change?
- What technologies are in extended maintenance?
- How do I convey the importance of technology investments to the business?

Every day, IT operations spend significant time and money assessing the impact of changes, reacting to unplanned business demands and responding to business outages. On-demand visibility into how infrastructure connects to projects, applications, business strategy, capabilities and roadmaps is crucial to make better decisions around optimizing IT spending and reducing operational risk.

## Benefits of Troux and HP Universal CMDB integration

The HP Universal Configuration Management Database (CMDB) integration with Troux quickly relates operational infrastructure information with details about technology lifecycles, applications and business, as well as pending projects stored with Troux.

With business and enterprise context available in IT Service Management tools, change management teams can significantly reduce the time spent analyzing the impact of change and make quicker business value-based decisions on everything from disaster recovery to strategic roadmapping.

Using the wealth of reports and visualizations in Troux, operations management can immediately see where infrastructure is old, risky, costly, underinvested, misaligned or ready to virtualize.

You can also prioritize scarce resources to increase uptime and service level agreements (SLAs) on efforts that matter most, while augmenting your information technology processes, such as change management, problem management and technology assessment with greater ease and improved accuracy. As a result you can:

- Significantly reduce the time and resources spent assessing the impact of change
- Mitigate business risks and outages by improving the total business impact of operational changes
- Improve business case assessment and prioritization for addressing aging infrastructure and technologies
- Enable operations to define and communicate optimal technologies for use on new projects
- Enable rapid results without boiling the data ocean using a proven 30-, 60- and 90-day plan

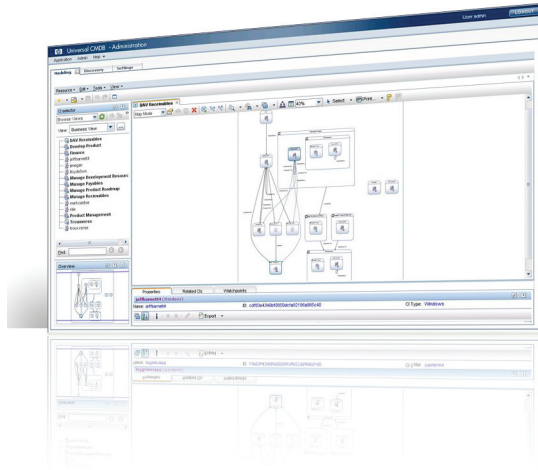
## How the integration works

By integrating HP and Troux, you can gain critical insight into how business changes and IT operations impact one another—a critical input for change impact analysis. You can then capture and connect key business and IT architecture information in Troux. You can also automatically synch the Troux system and the HP Universal CMDB to provide end-to-end line of sight. HP Universal CMDB infrastructure details enable out-of-the box Troux visualizations and impact analysis. Troux expertise and tools allow teams to capture and maintain information in a low cost way.



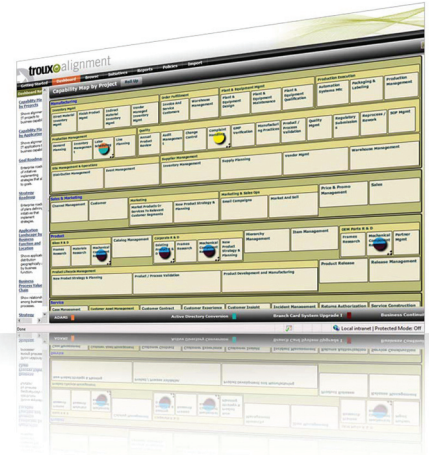
**Figure 1**

Change management teams save time with on-demand business and enterprise impact analysis



**Figure 2**

See immediately where aging infrastructure is adding cost and risk to key business capabilities



**Certification environment**

- Troux Platform V 8.0.1001 or later
- Troux Standards
- HP CMDB V8.0.1 or later
- HP Discovery and Mapping software collection

**About Troux**

Transformation at the speed of business is what Troux is all about. To keep pace in globally connected markets, where shocks and innovations happen at an unprecedented rate, business and IT must radically update their antiquated approaches to planning and executing transformations.

A global leader in strategic IT planning and Enterprise Architecture software, Troux guides customers to success with a unique combination of software, know-how, community and partners.

Troux customers benefit with improved business and IT agility, and with immediate cost savings through a simplified IT environment all enabled by bridging the information gap between business planning and IT planning. Just ask these Troux customers and partners: Accenture, AstraZeneca, Bayer, Barclays Bank, Beiersdorf, the U.S. Department of Labor, Fiducia, the U.S. Department of Health and Human Services, GMAC, Vattenfall and Vodafone.

For more information, visit [www.troux.com](http://www.troux.com).

This is an HP Indigo print.

**Technology for better business outcomes**

To learn more, visit [www.hp.com](http://www.hp.com)  
[www.troux.com](http://www.troux.com)

© Copyright 2010 Hewlett-Packard Development Company, L.P. The information contained herein is subject to change without notice. The only warranties for HP products and services are set forth in the express warranty statements accompanying such products and services. Nothing herein should be construed as constituting an additional warranty. HP shall not be liable for technical or editorial errors or omissions contained herein.

